



# HEAVY ENGINEERING WORKSHOP

1





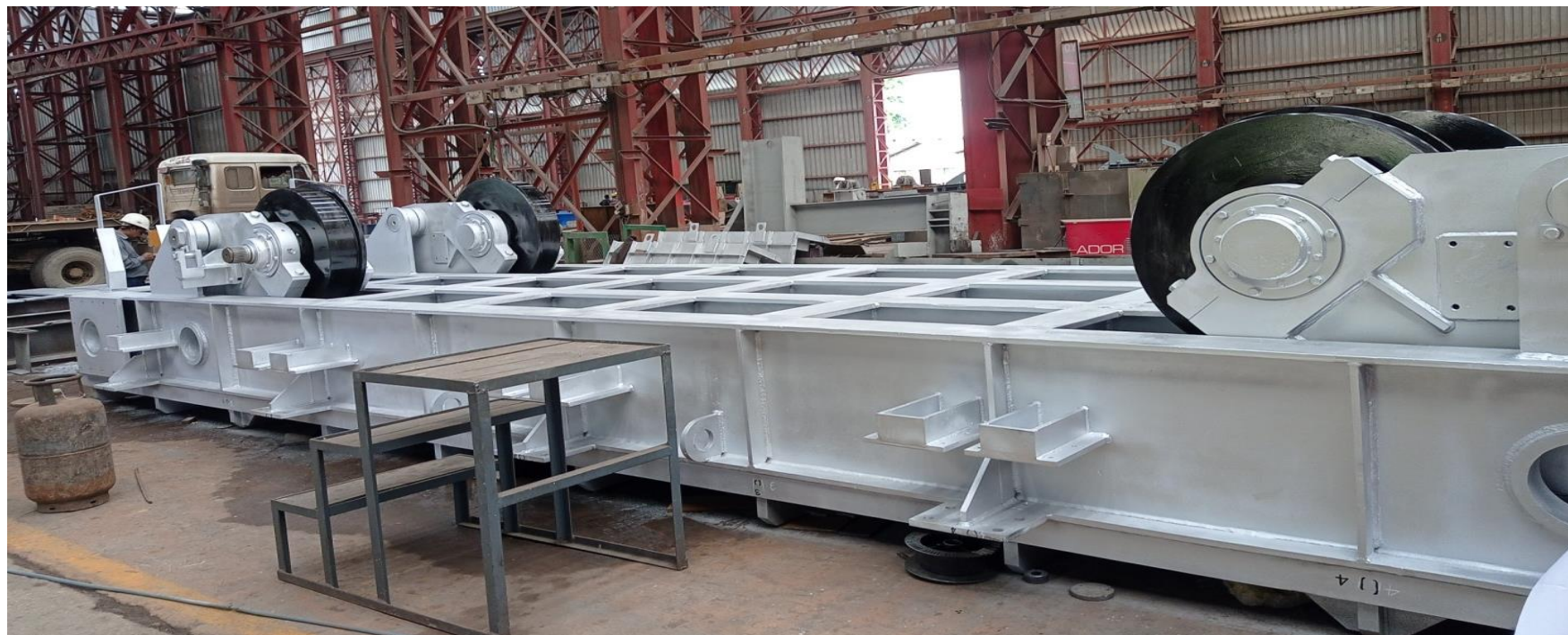
# HEW-REWA Caster & BOF Equipment



**LADLE TRANSFER CAR**



**EQUIPMENT TRANSFER CAR**



**SLAB TRANSFER CAR**



**HOOD TRANSFER CAR**



# HEW-REWA Caster & BOF Equipment



LADLE (CAPACITY - 350 MT)



LADLE TILTER (CAPACITY - 350 MT)



TUNDISH



TUNDISH BEAM SUSPENSION



# HEW-REWA Caster & BOF Equipment



UNIVERSAL BEAM SUSPENSION



STRAND GUIDE SUPPORT



SEGMENT WITH SUPPORT STRUCTURE (MINGO)



SEGMENT MANIPULATOR



# HEW-REWA Caster & BOF Equipment



**ROLLER TABLE**



**PILER PUSHER & DE-PILER PUSHER**



**SLAB TURNOVER DEVICE**



**UNIVERSAL BEAM SUSPENSION**



# HEW-REWA Caster & BOF Equipment



**ESP Structures**



**VESSEL RELINING MACHINE**



# HEW-REWA Caster & BOF Equipment



LIFTING CROSS TRANSFER CAR



LIFTING CROSS TRANSFER CAR



PILER TABLE



FIXED & MOVABLE STOP





# HEW-REWA CRM Equipment & Structures



**Tension Bridles Galvanization/ Pickling line**



**Zn Pot -60 MT capacity**



**Turndown Roll**



**Immersed Roll Assembly**



Exit Movable Carriage Looper Roll Assembly



Assly of Floor Beam  
Entry Looper EL +31M

Entry Looper Assembly



24 Sept 2022 10:03:48 am  
Gundardi  
Hazira  
Surat  
Gujarat

Entry & Exit Looper (38 Mts)



# HEW-REWA

## HRM Equipment & Structures



Reform Tub for WRM



Side Looper Assly (RH)



# HEW-REWA

## HRM Equipment & Structures



Stem Pallet



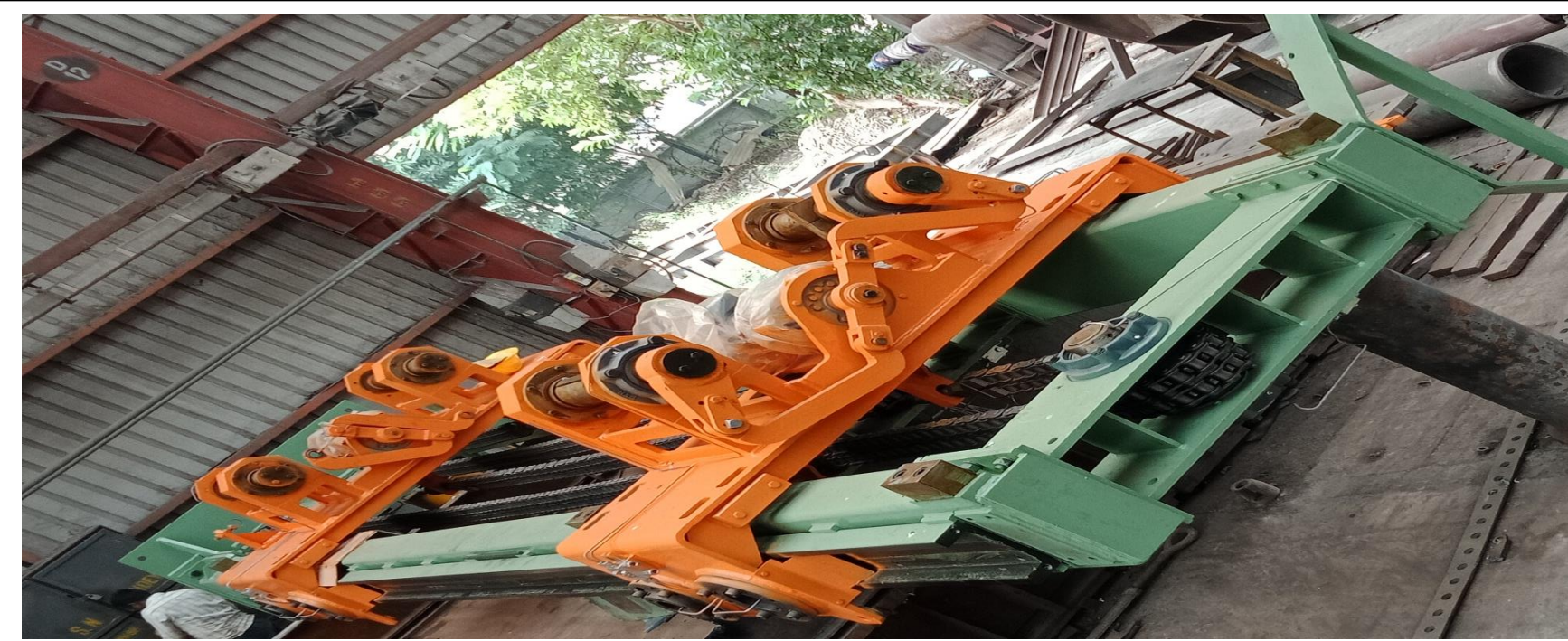
Unloader



Downender



Roller Table for Stelmor Conveyor



Lower & Upper Carriage Assembly - JSW Project

**Cement / Power Sector/ Metal**

**Equipment & Structural Fabrication, Repairing &  
Refurbishing**

# Belt Conveyor System

Design to Commissioning- HEW Experience More Than 21 Kms



**CROSS-COUNTRY BELT CONVEYOR SYSTEM AT  
(REWA CEMENT PLANT) (Belt Length: 2.5 Kms)**



**RAW MILL HOUSING ASSEMBLY (TOP & MIDDLE PART) - GEBR PFEFFIER INDIA**



**1600TPH LIME STONE CIRCULAR STACKER & RECLAIMER FOR BHUJ CEMENT PLANT**

# Equipment Manufactured for Power / Metal Sector



**Rotor Column**



**Roller Journal Assembly**



**Slew Bearing Assembly**



**Rope Drum Reel Trolley Assembly**

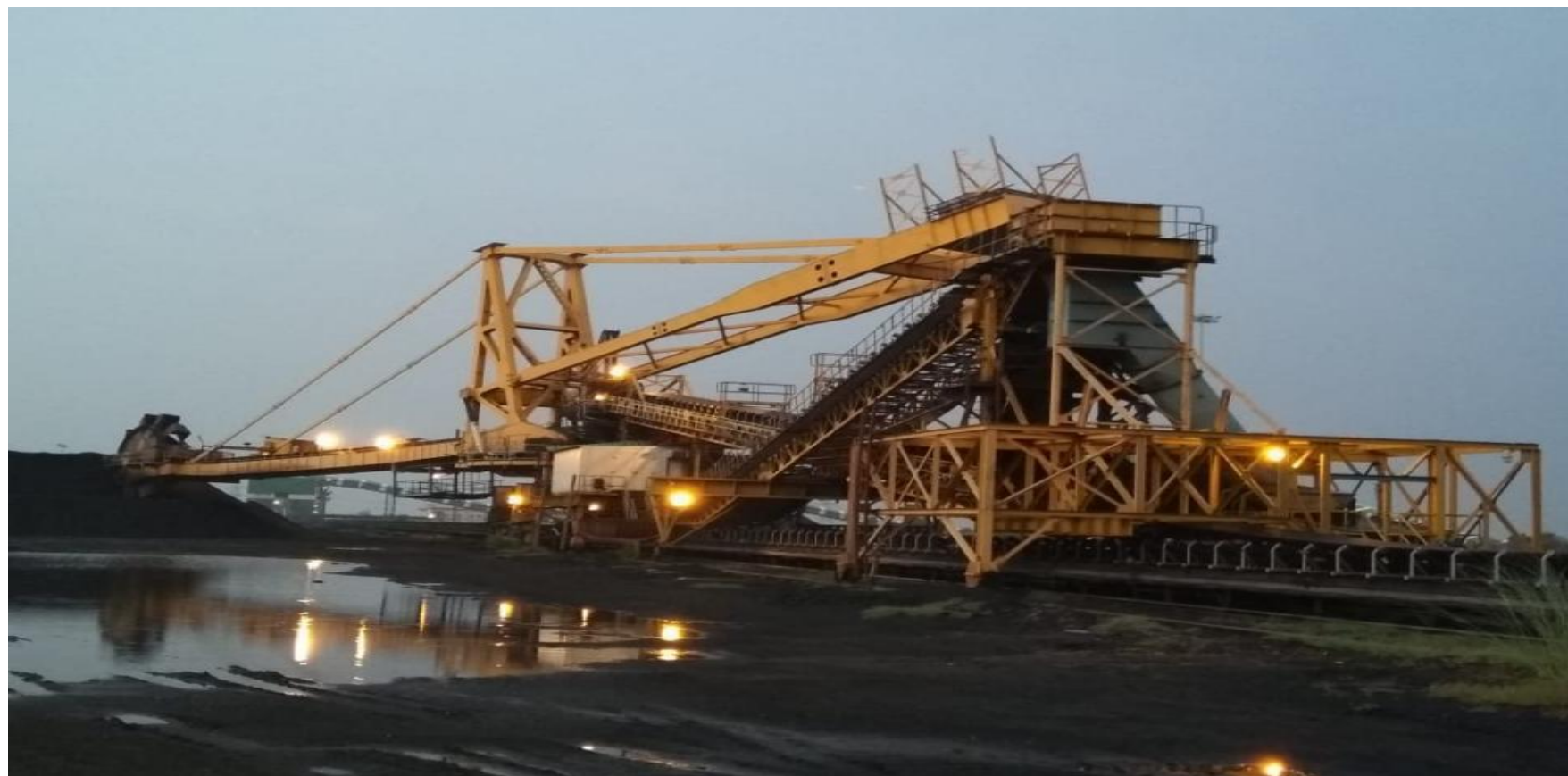
# Equipment Manufactured for Cement Plant/ Power Sector



**ROTARY KILN TUBE ID 4.35 Meter for L&T**



**Top & Middle part of Raw Mill Housing**



**2600/2860 TPH Bucket Wheel Stacker & Reclaimer , Bara**



**HVOF Coating with Aid of 7-Axis Robot**

# HYDRO MECHANICAL EQUIPMENTS (HME)



**Main Spill Way Radial Gate (Weight 205 Metric Tonne) (8 x 18 x 20) Mts With Arms & Trunion Control Assembly for BHUTAN Hydro Electric Project**

# Stacker Reclaimer (40 Nos) Bulk Material Handling Equipment

Boom Length : 41 Mtr.



**1000 TPH Bucket Wheel Stacker & Reclaimer Under Commissioning at  
Damodar Valley Corporation (DVC) Bokaro Thermal Power Plant Project, Jharkhand, India**

# HEW is Approved Workshop from Indian Railways for Steel Bridge Manufacturing



**GKP-VNS Highway**      **Road**  
**Over Bridge (ROB) (824 MT)**

# Pressure Vessel / Process Equipment



CLIENT : KFCL AMMONIA & UREA PLANT, KANPUR

Ø 4.1/2.2 M x 30 M Lg. Regenerator Column Wt. : 40 MT. Material : SA-517 & SS-304

# Hydro Turbine Parts/ Pelton Wheel Repair



**PELTON RUNNER**



**GUIDE VANE**



**HVOF COATING WITH AID OF 6-AXIS ROBOT**

# Thermal Power Plant & Other Steel Structures



THYSSENKRUPP (TKIL) OBRA POWER PROJECT



JAYPEE NIGRIE SUPER THERMAL POWER PLANT STRUCTURE



IRON ORE HANDLING STRUCTURES -JSW



COAL HANDLING STRUCTURE - DOOSAN PROJECT